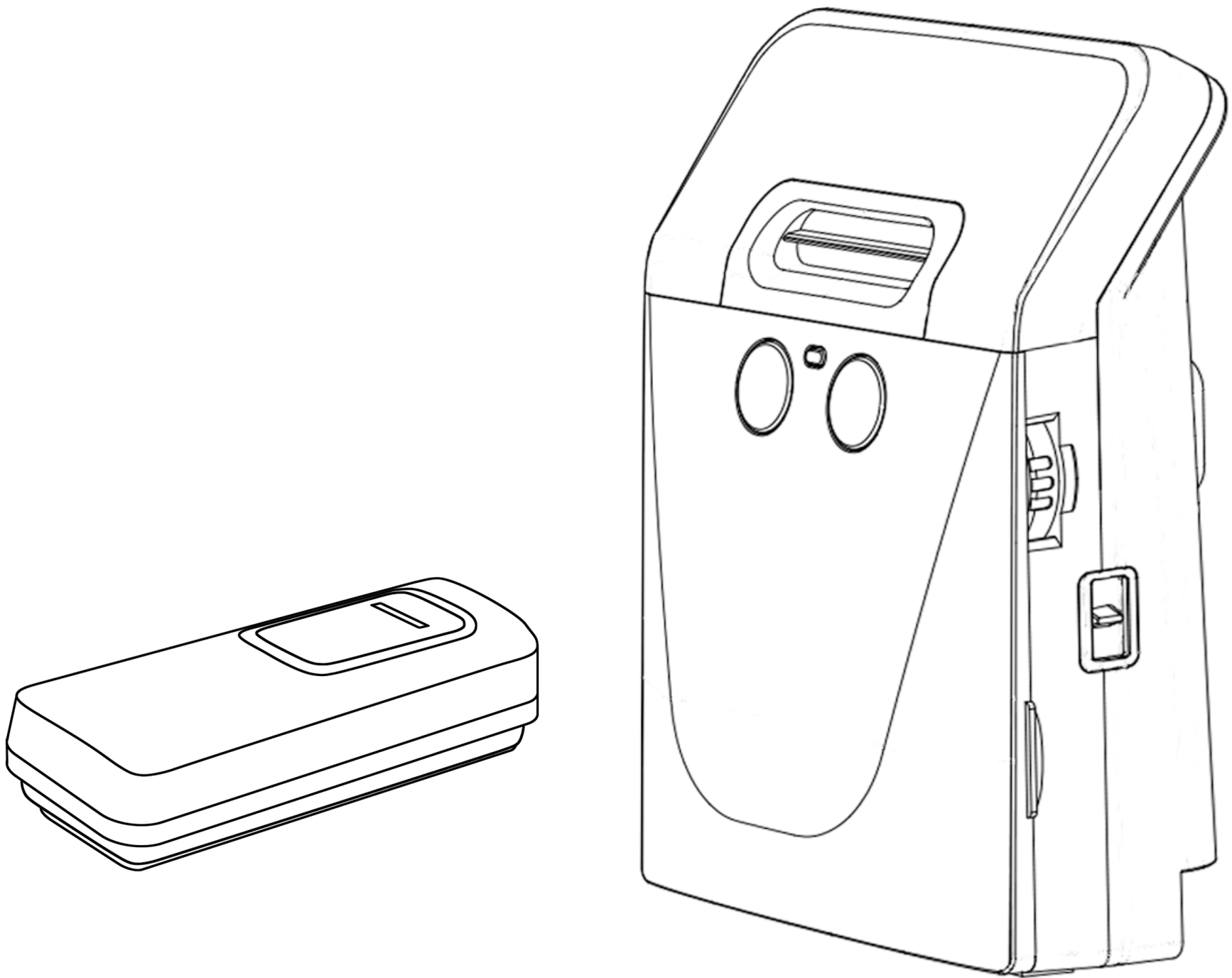




chimeflash_{v2}



Introduction

The Sarabec chime**flash**_{v2} provides a practical wireless solution for hearing and seeing when you have a caller at the door or when the telephone is ringing. (Telephone transmitter and Sound Sensor sold separately)

This is achieved by using extra loud sounds, ultra-bright flashing LED's, and colored indicators.

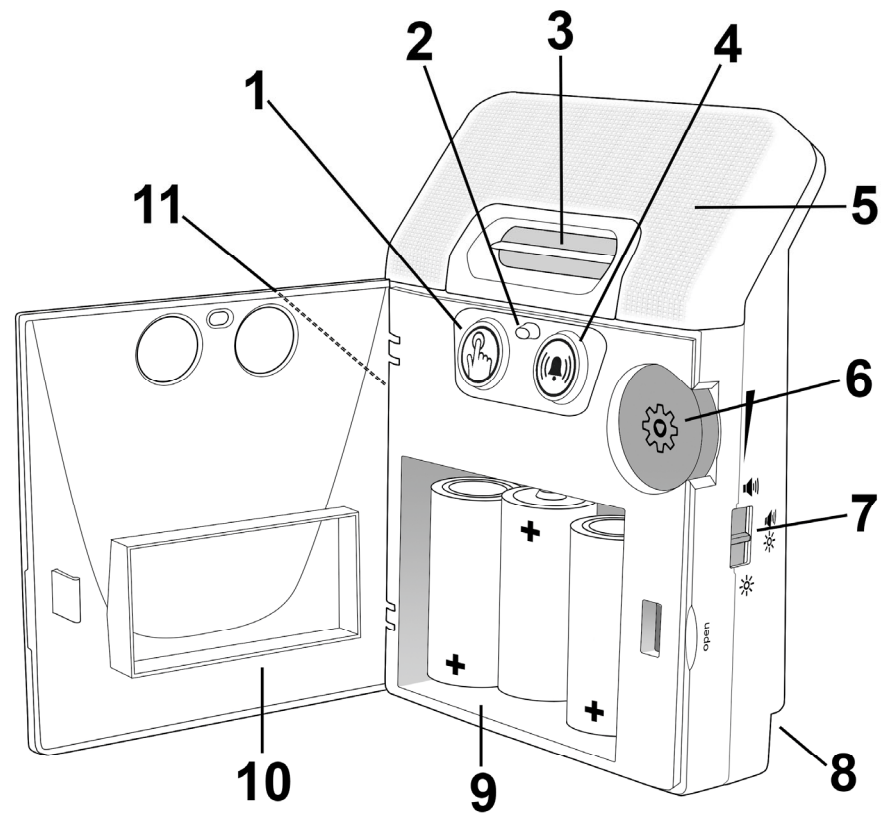
System contents

- chime**flash**_{v2} Receiver
- Bellpush (With Mounting Plate)
- CR2032 Size Battery (For Bellpush)
- 3 x "C" size Alkaline Batteries (For Receiver)
- Screws and Fixings
- Operating Instructions

Product Overview

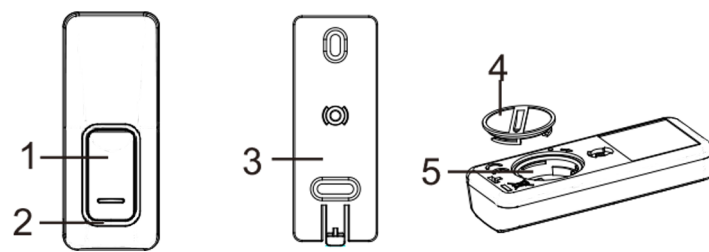
Receiver Unit

- 1) Doorbell Icon (Green)
- 2) Battery Low Indicator
- 3) Speaker Port
- 4) General Bell Icon (Orange)
- 5) Flash Lens
- 6) Volume/Setup (Multifunctional)
- 7) Alert Type Selector
- 8) Power Supply Socket
- 9) Battery Compartment
- 10) Battery Compartment Door
- 11) Accept Button



Bellpush

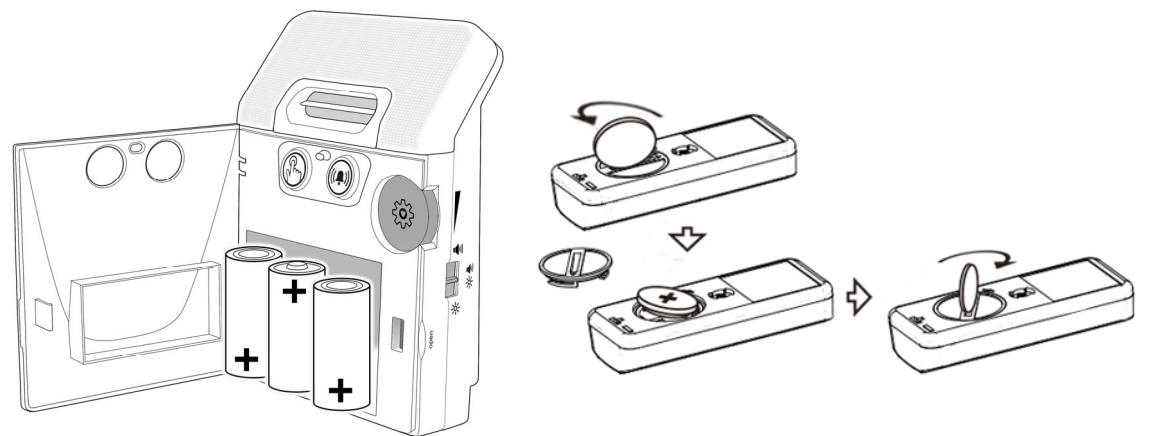
- 1) Push Button
- 2) Push Indicator
- 3) Mounting Bracket
- 4) Battery Cover
- 5) Battery Compartment



Battery Installation

Insert 3 x "C" size alkaline batteries into the battery compartment on the receiver unit.

Remove the battery cover on the push transmitter using a coin and insert the CR2032 battery (Positive side up).



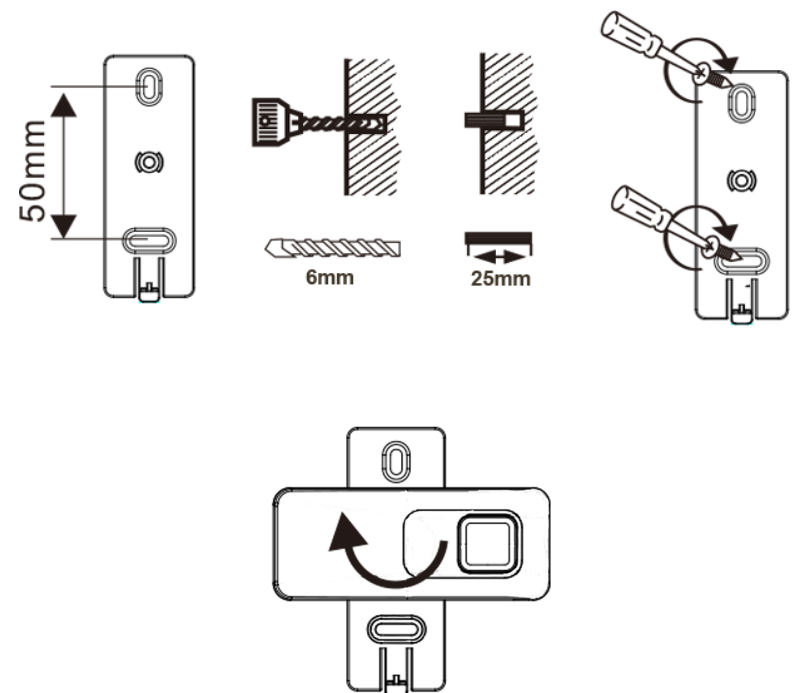
Fixing and Wall Mounting

Bellpush

We recommend attaching the bellpush mounting plate to your door or frame using the sticky pad already attached.

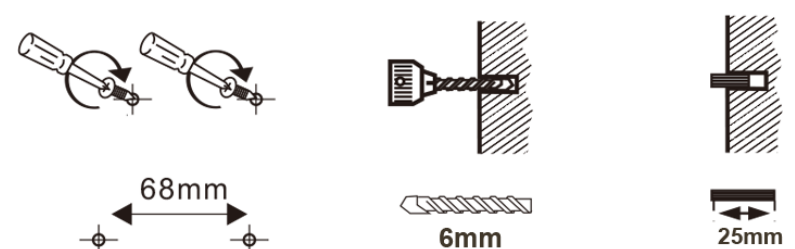
The provided screws and plugs can be used for fixing the bellpush to masonry OR for wall mounting the Receiver unit.

The Bellpush should be fitted to the mounting plate at a 90 degree angle and then rotated either clockwise or anti-clockwise until a click is heard.



Receiver

The Receiver can be wall mounted, we would suggest using the screws provided for doing this and mount the bellpush using the sticky pad already attached to the mounting plate.

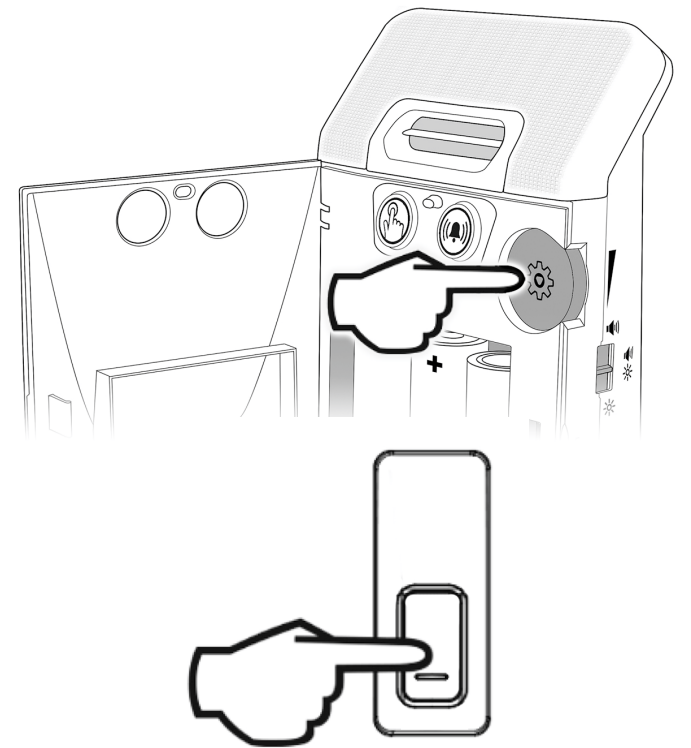


Initial Setup

Note: chime **flash**_{v2} is pre-programmed and ready to use once the batteries have been inserted. Follow the instructions below if you want to add another transmitter, set a melody or adjust volume.

- 1) Press & hold the setup button for 2-3 seconds, the green doorbell symbol will illuminate and flash at a steady rate.
- 2) Press the bellpush transmitter button, a single beep will be heard, and the orange symbol will start flashing, this indicates that the bellpush and receiver are now paired to the green symbol.
- 3) If you wish to add another transmitter, press the button on the second transmitter, a single beep will be heard and the green and orange symbols will now both be flashing. The second transmitter and receiver are now paired to the orange symbol.
- 4) Both the orange and green symbols will now be flashing, if a third transmitter is to be added press the third transmitter button, a single beep will be heard. The third transmitter is now paired to the third symbol which is shown as both the orange and green symbols indicating together.
- 5) The system will now be fully programmed.

To advance to another symbol at any point, press the setup button once, multiple presses will cycle through the symbols until you exit the setup system.



Melody Selection

There are 8 melodies to choose from.

Press and hold the setup button for 2-3 seconds to enter setup mode, the green symbol will steadily flash. Release the setup button.

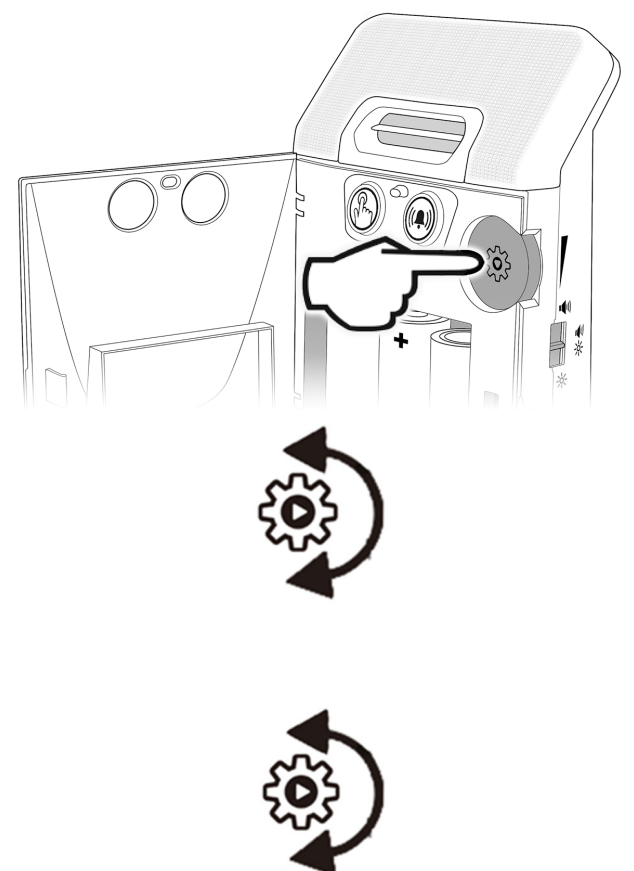
If this is the symbol you would like to change the melody of then simply rotate the setup button until you hear the sound you wish to keep. If you wish to change the sound on the second symbol press the setup button once, the bell symbol will flash and follow the instructions above.

Once the desired melody is selected press the setup button to exit the setup mode.

Volume Control

There are 8 volume levels. Every level has a single beep which corresponds to the volume level, when you hear a double beep you have reached maximum volume.

The volume level can be set at any time except when in setup mode. The chosen volume level is the same for both transmitters if using a second bellpush or telephone transmitter.



Alert Type

chime **flash** can be set to output Sound Only, Flash Only or Sound and Flash together using the slide switch on the side of the receiver unit.

Sound Only



Flash Only



Sound & Flash



Accept Button

This button can be used to acknowledge the chime **flash**_{v2} alerts, press this button any time when the system is triggered, it will stop it immediately.



Care & Maintenance

This product may be cleaned with a soft, lint-free cloth. Do not use household cleaners or abrasives.

Disinfectant wipes, alcohol wipes or hydrogen peroxide wipes may be used to clean the outside casing of both the transmitter and receiver units. These wipes should be damp not wet and under no circumstances should any free liquid be used on the items that may enter any of the holes of the system components.

If the receiver gets wet it should be serviced by an authorised person before re-use.

Optional Accessories

The following Accessories are available direct from Sarabec.

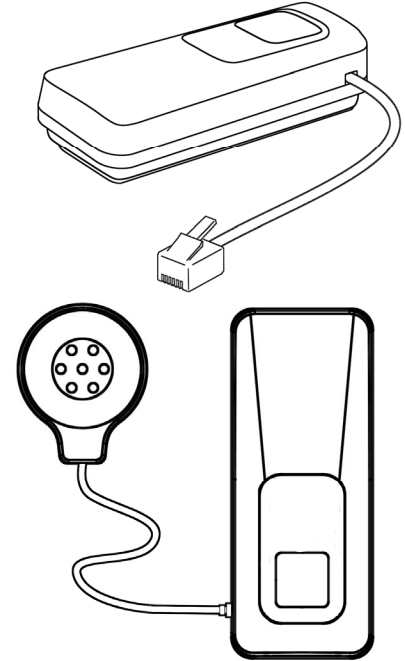
Telephone transmitter **Order Code: 150-024**

Sound Sensor **Order Code: 150-028**

Mains Power Supply **Order Code: 150-049**

When using the mains power supply the batteries in the receiver act as a battery back up in case of power failure.

Only the 12v 1A Sarabec power supply should be used with this equipment.



Troubleshooting

Problem	Solution
The RED Indicator on the receiver is blinking every 15 seconds and volume level has dropped	Replace batteries as they are LOW (replace with "C" size Alkaline batteries)
The Green or Orange Symbols on the receiver are blinking every 15 seconds	Replace the corresponding transmitter coin cell battery (CR2032)
I need to clear a transmitter from the system's memory	Enter the setup mode, then press and hold the setup button for 3 seconds, a beep will be heard, press the setup button once and clear the second symbol if required by holding the setup button again for 3 seconds, if not press the setup button again to leave the setup mode
My system is being triggered at random (Possibly by a neighbour's doorbell system)	Open the battery cover of the transmitter, remove the battery, press and hold the pushbutton for 5 seconds whilst inserting the battery back into the push, the LED will blink 5 times to show that a new code has been generated. Clear the transmitter from the memory of the receiver and follow the setup instructions to re-pair the transmitter to the receiver again.
I cannot remove my transmitter from its mounting plate	There is a small tab located on the bottom of the mounting plate which must be pushed away from the transmitter, this will allow you to rotate the transmitter on the plate to remove it

If you have a Pacemaker or ICD fitted you may wish to read the FAQ on our website before using this product.

<p>Sarabec Ltd 15 High Force Road Middlesbrough United Kingdom TS2 1RH Telephone: 01642 247789 email: mail@sarabec.co.uk website: www.sarabec.com</p> <p>This system carries a 2 year guarantee, please contact your point of sale in the event of any issues.</p>	<p>Sarabec Ltd declares that chime flash complies with all relevant UK Statutory Instruments.</p> <p>Sarabec Ltd declares that chime flash complies with all relevant EU directives.</p> <p>Sarabec's EU authorised representative: HUMANTECHNIK GmbH, Im Wörth 25, D-79576 Weil am Rhein, Germany.</p> <p>The full declaration of conformity for the Chimeflash is available from Sarabec Ltd.</p>	Specifications	
		Frequency:	868.4MHz
		Maximum Volume:	Up to 100dB @ 1m
		Range:	Up to 300m (Open Space)
		Power Requirements	3 x C size Alkaline batteries or Mains Power 12v 1A PSU for Receiver 1 x CR2032 for Transmitters

The Wheely bin logo is the industry wide symbol for this type of product. The symbol, when appearing on electronic product, indicates that the item should NOT be treated as ordinary household waste when due for disposal.



Is a registered mark of Sarabec Ltd.
© Sarabec Ltd